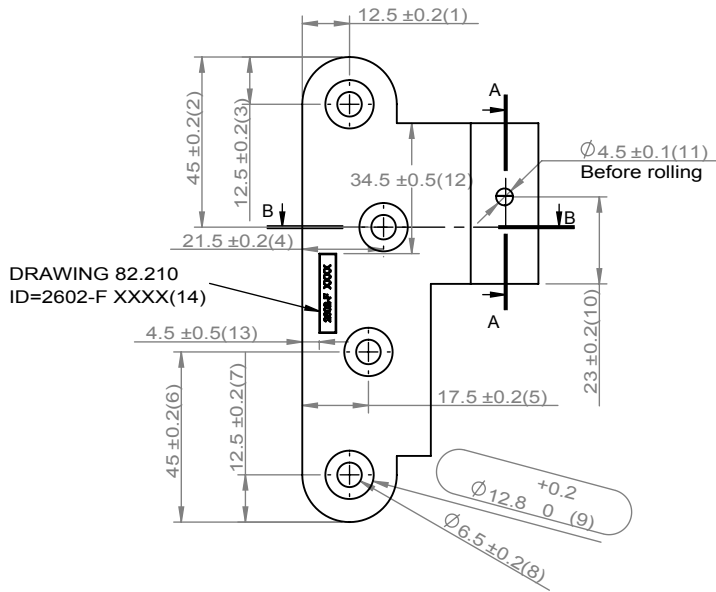
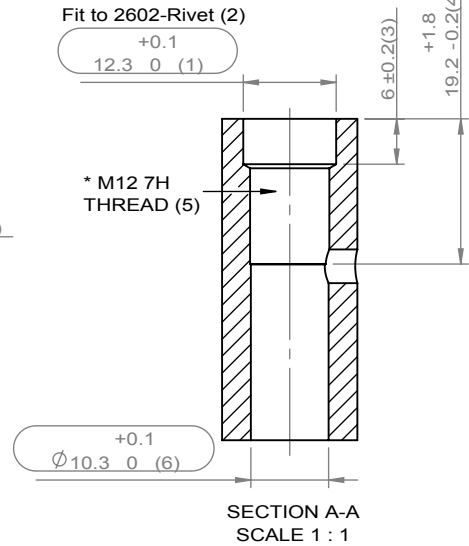


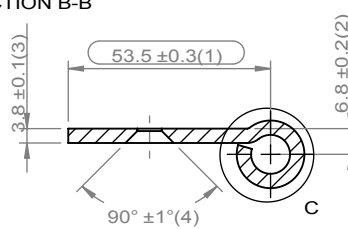
No. 1-11 DIM.



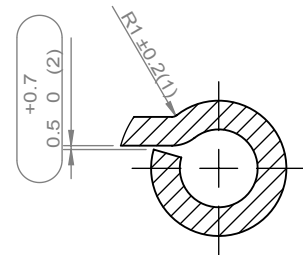
No. 2-6 DIM.



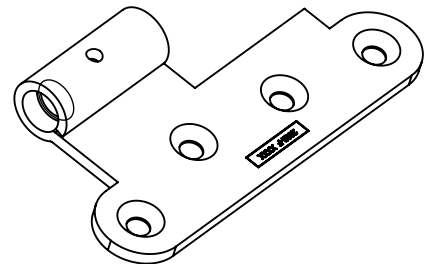
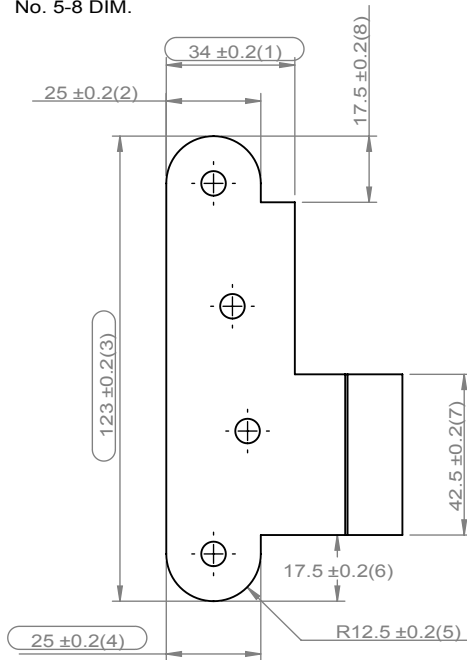
No. 3-4 DIM. SECTION B-B



No. 4-2 DIM.




No. 5-8 DIM.



*) : + 'shotblasting'

TOLERANCE ZONE 7H IS VALID AFTER COATING (7G BEFORE COATING)

 www.rationel.com	Requir. spec.	219	Scale	1:2
		*)	Date	10-03-2004
Title RATIONEL DOOR HINGE 2602 LEFT CARRYING FEMALE	Material	S235JR W.no. 1.0037	Design.	ES
	Weight	169.62g	App. by.	HN
	05 48/13 SUD	TURN ID, SPEC->219+shotblasting	Project no.	01
	04 22/06 ES	SUPPLIER'S ID -> XXXX	Part. no.	
	03 09/05 ES	TOLERANCE FOR THEARD		2602--F-S
Edit	Week/year	Sign. Rev.	Edition No.	05