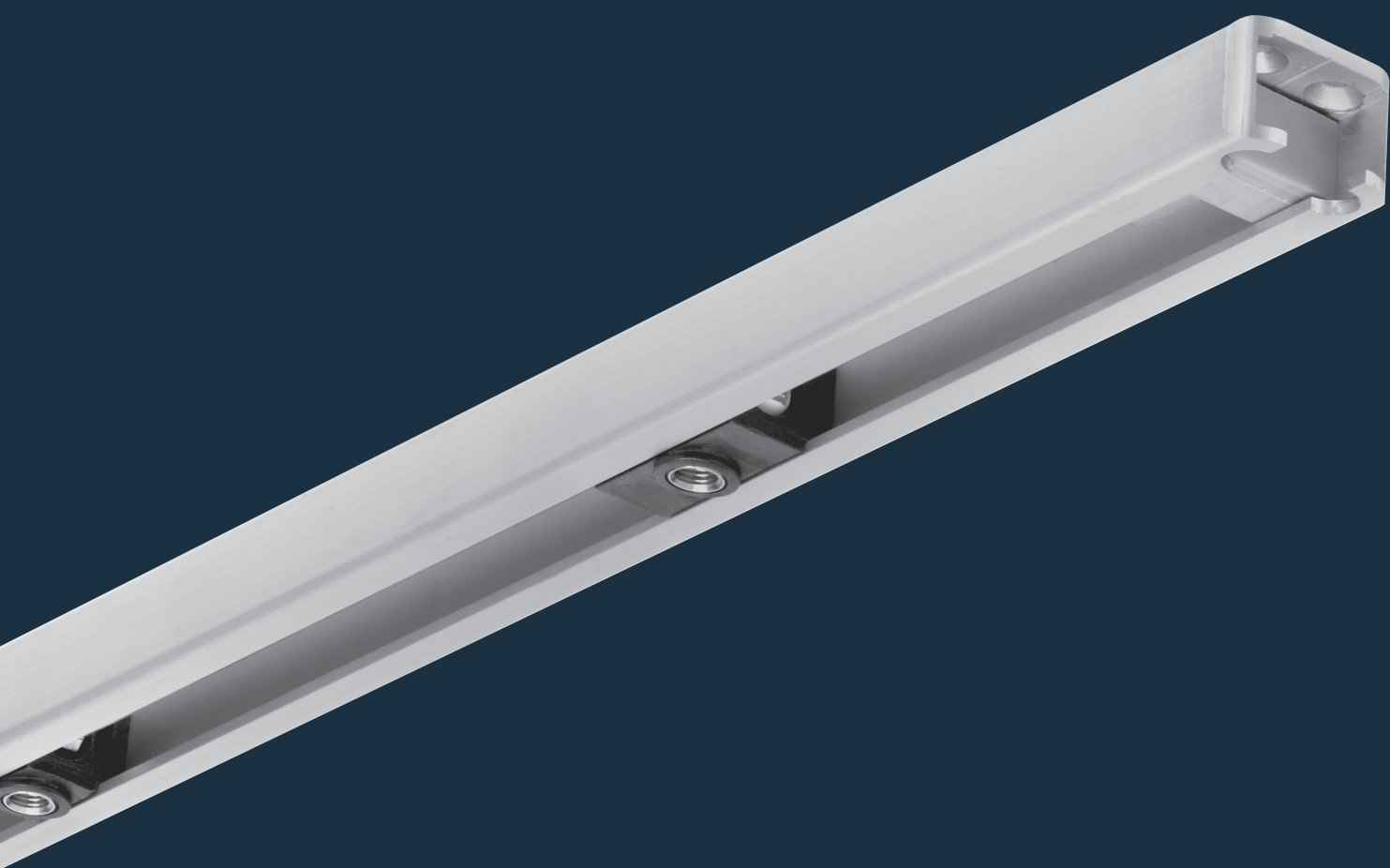




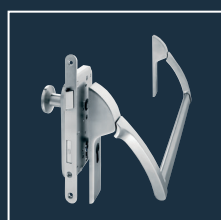
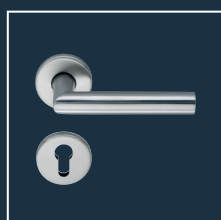
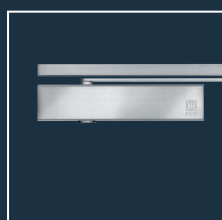
ECO Slide rail

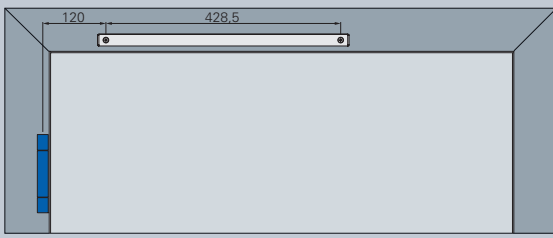
B / B-FKL / K

Product information

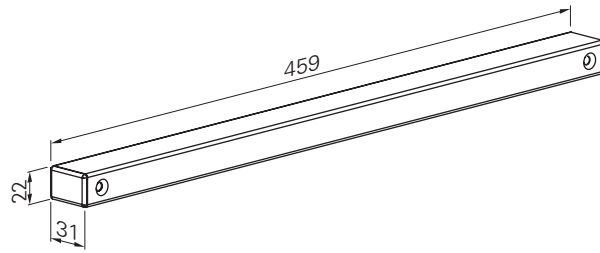


■ SYSTEM TECHNOLOGY FOR THE DOOR





Mounting slide rail B



Slide rail - Basis (GS B)

For surface fixed

For the use in preventive fire-protection. Slide rail is tested acc. to EN 1154 A.

Slide rail for ECO Newton TS-61/51, Multi-Genius (surface mounted)	Colour	Article number
GS B (Si)	Silver RAL 9006	350120000A00010
GS B (W)	White RAL 9016	350120000E00010
GS B (Br)	Brown RAL 8014	350120000D00010
GS B (S)	Black RAL 9005	350120000G00010

Scope of delivery incl. arm for slide rail B for TS-61/51

Slide rail for ECO Newton TS-41/31	Colour	Article number
GS B (Si)	Silver RAL 9006	350120000A00510
GS B (W)	White RAL 9016	350120000E00510
GS B (Br)	Brown RAL 8014	350120000D00510
GS B (S)	Black RAL 9005	350120000G00510

Scope of delivery incl. arm for slide rail B for TS-41/31

Slide rail with mechanical hold open (GS B-FKL)

Hold-open angle adjustable from approx. 70° to 150°. For surface fixed

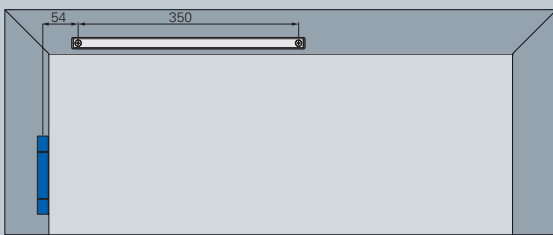
This version can be achieved afterwards by using slide rail B and accessory set FKL. **Not** suitable for the use in fire-protection. Please specify DIN direction when ordering.

Slide rail for ECO Newton TS-61/51, Multi-Genius (surface mounted)	Colour	Article number
GS B (Si)	Silver RAL 9006	350120000A56210
GS B (W)	White RAL 9016	350120000E56210
GS B (Br)	Brown RAL 8014	350120000D56210
GS B (S)	Black RAL 9005	350120000G56210

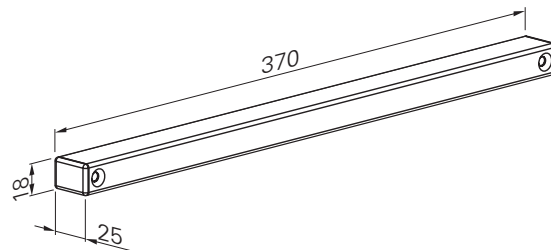
Scope of delivery incl. arm for slide rail B for TS-61/51

Slide rail for ECO Newton TS-41/31	Colour	Article number
GS B (Si)	Silver RAL 9006	350120000A56510
GS B (W)	White RAL 9016	350120000E56510
GS B (Br)	Brown RAL 8014	350120000D56510
GS B (S)	Black RAL 9005	350120000G56510

Scope of delivery incl. arm for slide rail B for TS-41/31



Mounting slide rail K



Slide rail K

for door closer ECO Newton TS-41, TS-31 and TS-15 K

For surface fixed

For the use in preventive fire-protection only with ECO Newton TS-41 and TS-31. Slide rail is tested acc. to EN 1154 A.

Scope of delivery incl. arm for slide rail K.

Slide rail	Colour	Article number
GS K Si	Silver RAL 9006	350150000A00000
GS K W	White RAL 9016	350150000E00000
GS K Br	Brown RAL 8014	350150000D00000
GS K S	Black RAL 9005	350150000G00000

ECO Schulte GmbH & Co. KG
Iserlohner Landstraße 89
D - 58706 Menden

Telefon: +49 2373/92 76 - 0
Fax: +49 2373/92 76 - 40

info@eco-schulte.de
www.eco-schulte.de

© ECO Schulte GmbH & Co. KG - Änderungen vorbehalten
© ECO Schulte GmbH & Co. KG - Subject to change